

H. L. Worden Co.

"Make a Lamp"

System

GF16-14 Pansy T 16"

Rev. 11/12

Cartoon Pattern Packet

Lamp Specifications

No. Glass Pieces: 632
Glass Needed: 5 sq. ft.
Diameter: 16"
Height: 8"
Aperture: 4"
Design Repeats: 4

Needed to make this lamp

Pattern Packet No. GF16-14*
FullForm™ No. GF16**
Stained Glass
4" Vase Cap***
Lamp Base or Hanging Hardware
to Swag



Additional Items Needed

Basic Supplies
Basic Tools

*No. GF16-14 Pattern Packet



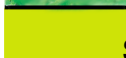

Includes:

1 Paper Pattern Sheet
4 MagicStrip™ Sheets
1 Instructions
1 Color Key w/ Glass Descriptions

**No. GF16 FullForm™

360° form embossed and
numbered to accept glass
placement guides (cartoon)

Lamp

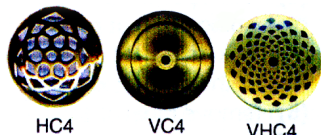
Color	Key	Description	Glass Type	Sq. Ft.
	N	Background	Lt. Green Opal	2.75 sq. ft.
	L/LD	Leaves	Lt./Dk. Green Opal	1 sq. ft.
	S	Stems	Lt. Green Opal	.25 sq. ft.
	F/C	Flowers/Centers	Purple, Red, Yellow, Blue, Orange	1.5 sq. ft.

One
to



make this 4-repeat design

** 4" Vase Cap



Need One 4" (10.2cm) Vase Cap
Sold Separately

Paper Pattern
MagicStrips™
MADE IN USA

©1991, H. L. WORDEN CO. ALL RIGHTS RESERVED

FULL FORM CONSTRUCTION TIPS

Follow the Basic Method detailed in the WordenSystem™ Instruction Manual.

(1) Select, cut, trim, and pin all stained glass pieces over the MagicStrip™ cartoon on the form. COMPLETELY COVER THE FORM. Use glass headed pins or common pins. Be sure to push the pins all the way in to hold each glass piece securely.

(2) To ensure the vase cap will be level: If using a positioner; place vase cap at the top of the form; secure with a lock nut; cut and fit glass to the vase cap; tack solder before removing shade from the form.

If not using positioner: place a 4" threaded rod through the hole in the form; place vase cap at top of the form; put a second vase cap or a check ring or washer inside the form; secure with lock nuts at both ends of the rod; cut and fit glass to the vase cap as above. If necessary, trim the top of the form to fit the vase cap in place.

(3) To foil, pull the pins part way out, just far enough to remove each glass piece one at a time; foil & repin.

(4) Tack solder all glass pieces together. Wipe and burnish with a wet cloth to stop oxidation.

(5) Remove all of the pins. Leave the lamp on the form and make a flat seam by tinning all exposed copper foil. Wipe and burnish with a wet cloth.

(6) DO NOT BUILD ROUNDED SEAMS ON THE FORM. Remove the lamp and fill and then build the inside seams then do the outside.

By filling the inside first, any flow through will be removed when building the outside seams.

Strip Grid Cutting

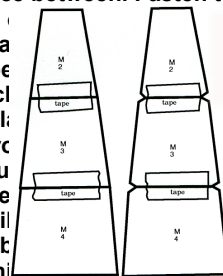
For fast, easy cutting, background may be assembled in strips either horizontally or vertically. Assemble grid vertically so that color flow and grain extends from one part to the next.

Vertical: Arrange the background pieces together similar illustration with no space between. Fasten together with cellophane tape. Notch

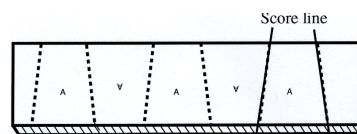
can be drawn on the glass the center of this line be Score, break and cl proceeding with the bal: how patterns can be gr

Horizontal: First cut the height of each piece row around the lamp will the rows in a lamp will t pattern on the glass whi end until you have enough to cover one sectional form or one pattern repeat. Make adjustments if necessary and cut out the number you will need for the entire lamp.

Overlap the grid pattern pieces so that adjoining pieces share a score line.



Top Pattern
By Score in
Pattern pieces
n before
3 illustrates
then cut apart.
vertically
is equal to
eces in each
ver, not all
lark each grid
end over



Arrange grid work pattern on strips, mark and score



Use our No. 330 Positioner for full forms. The No. 330 is also used with partially finished shades whether built on sectional or full forms. Once the vase cap is installed put your lamp on the No. 330 and position the shade to have a level surface for final soldering.

GlassHouseStore.com
Decatur IL

