

# H. L. Worden Co.

## "Make a Lamp"

### System

#### Lamp Specifications

No. Glass Pieces: 294  
 Glass Needed: 7.3 sq. ft.  
 Diameter: 16"  
 Height: 9"  
 Aperture: 3"  
 Design Repeats: 6

#### Needed to make this lamp

Pattern Packet No. G16-20\*  
 SectionalForm™ No. G16\*\*  
 Stained Glass  
 3" Vase Cap\*\*\*  
 Lamp Base or Hanging Hardware  
 to Swag

#### Additional Items Needed

Basic Supplies  
 Basic Tools

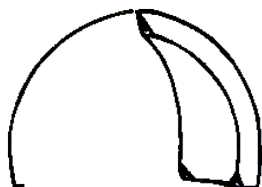
#### \*No. G16-20 Pattern Packet

##### Includes:

1 Paper Pattern Sheet  
 1 MagicStrip™ Sheet  
 1 Instructions  
 1 Color Key w/ Glass Descriptions  
 1 Sideboard

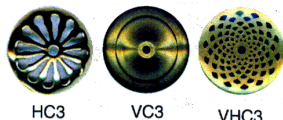
#### \*\*No. G16 SectionalForm™

Sectional form embossed and  
 numbered to accept glass  
 placement guides (cartoon)



One Reusable SectionalForm™ is  
 used to make this 6-repeat design

#### \*\*\* 3" Vase Cap

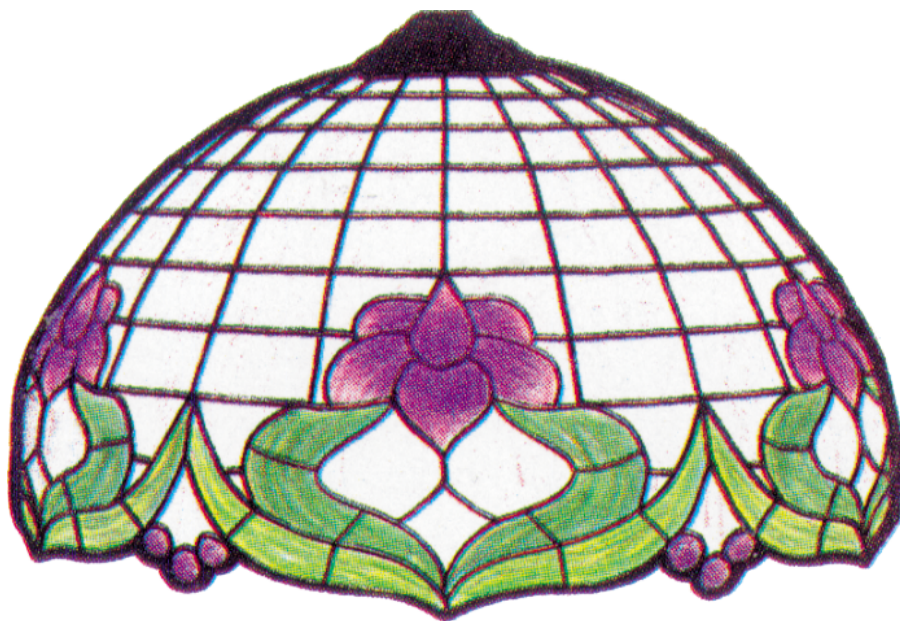


Need One 3" (7.6cm) Vase Cap  
 Sold Separately

# G16-20 Rococo

Cartoon Pattern Packet

Rev. 9/12



#### Lamp

Color	Key	Description	Glass Type	Sq. Ft.
B	Background	Lt. Amber/White Opal		3.75
D1	Leaves	Lt. Green Opal	1.25	
D2	Leaves	Green Opal	1.5	
S	Flowers	Purple Opal	.75	

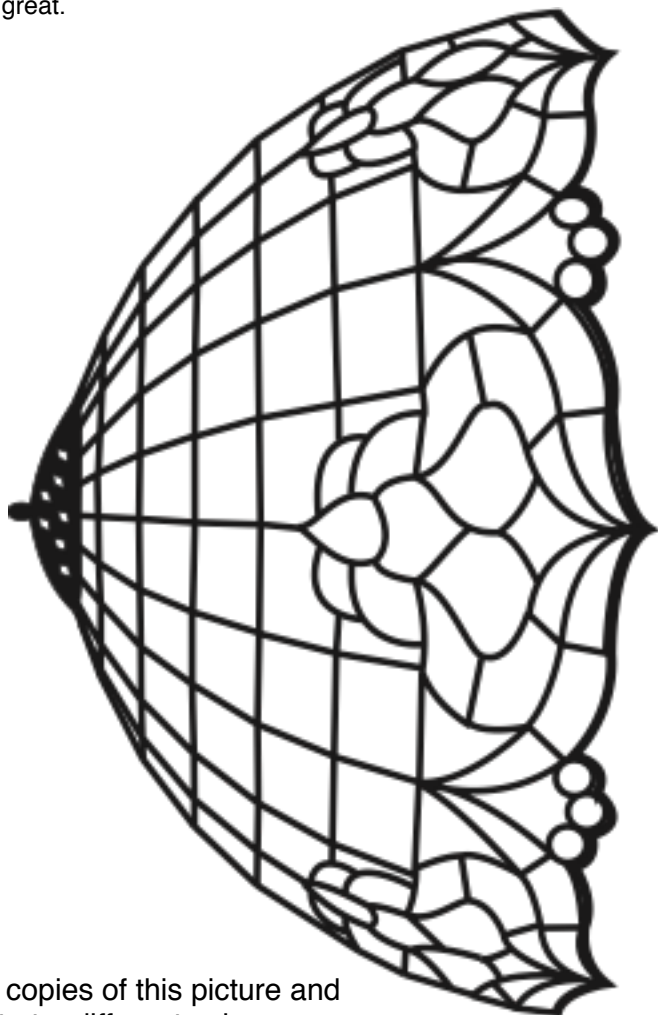
Paper Pattern  
 MagicStrips™  
 MADE IN USA

©1991, H. L. WORDEN CO. ALL RIGHTS RESERVED

## Sectional Form Construction Update

New easy time saving techniques that make lamp crafting more fun. To assure that the completed lamp is perfectly round and the form is not melted from solder flow through, follow the steps below. Refer to the manual.

- (1) Cover the form with parts - hold with pins.
- (2) Pull pins part way out, foil and repin.
- (3) Tack solder all parts together.
- (4) Flatten the solder tacks out and tin the exposed foil on the outside with a flat seam. - DO NOT FILL OUTSIDE SEAMS ON FORM.
- (5) REMOVE the glass sections as they are completed and store.
- (6) USE SOLDER LOOPS. The discovery of solder loops to hold the sections until they are fastened together is so easy to do. You can adjust the glass sections by bending the sections slightly if necessary for a perfectly round fit before tack soldering together.
- (7) The lamp is now ready to complete. Fill and build all the inside seams, then do the outside. By filling the inside first any solder flow through will be removed when building the outside seams. If you are making several lamps consider using Worden Lamp Positioner to build seams it works great.



Make copies of this picture and color to try different color combinations for your lamp. Use the paper pattern for glass description.

## Strip Grid Cutting

For fast, easy cutting, background may be assembled in strips either horizontally or vertically. Assemble grid vertically so that color flow and grain extends from one part to the next.

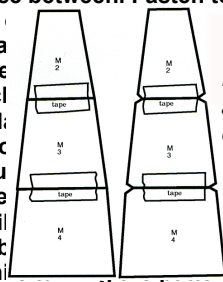
**Vertical:** Arrange the background pieces together similar illustration with no space between. Fasten together with cellophane tape. Notch can be drawn on the glass the center of this line be

Score, break and cl proceeding with the bal how patterns can be gro

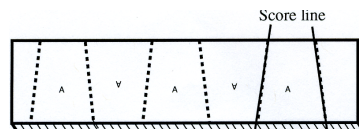
**Horizontal:** First cu the height of each piece row around the lamp wil the rows in a lamp will b pattern on the glass whi

end until you have enough to cover one sectional form or one pattern repeat. Make adjustments if necessary and cut out the number you will need for the entire lamp.

Overlap the grid pattern pieces so that adjoining pieces share a score line.



**Pattern pieces** arranged to cut grid work vertically. It is equal to pieces in each ver, not all lark each grid end over



Arrange grid work pattern on strips, mark and score

**GlassHouseStore.com**  
**Decatur IL**

